

**PEX6 Antibody**  
**PEX6 Antibody, Clone S233-8**  
**Catalog # ASM10302**

**Specification**

---

**PEX6 Antibody - Product Information**

Application	<b>WB</b>
Primary Accession	<a href="#">O13608</a>
Other Accession	<a href="#">NP_000278.3</a>
Host	<b>Mouse</b>
Isotype	<b>IgG1</b>
Reactivity	<b>Human, Rat</b>
Clonality	<b>Monoclonal</b>

**Description**

Mouse Anti-Human PEX6 Monoclonal IgG1

**Target/Specificity**

Detects ~100kDa.

**Other Names**

PAF 2 Antibody, Peroxin 6 Antibody, Peroxisomal AAA type ATPase 1 Antibody, Peroxisomal biogenesis factor 6 Antibody, PXAAA1 Antibody, peroxisomal-type ATPase 1 Antibody, peroxisome biogenesis factor 6 Antibody

**Immunogen**

Fusion protein amino acids 2-294 (N-terminus) of human PEX6. Rat: 82% identity (243/293 amino acids identical). Mouse: 82% identity (244/294 amino acids identical). <50% identity with other PEX proteins.

**Purification**

Protein G Purified

Storage **-20°C**

**Storage Buffer**

PBS pH 7.4, 50% glycerol, 0.1% sodium azide

Shipping Temperature **Blue Ice or 4°C**

**Certificate of Analysis**

1 µg/ml of SMC-470 was sufficient for detection of PEX6 in 20 µg of rat brain lysate by colorimetric immunoblot analysis using Goat anti-mouse IgG:HRP as the secondary antibody.

**Cellular Localization**

Cytoplasm | Peroxisome | Peroxisome Membrane

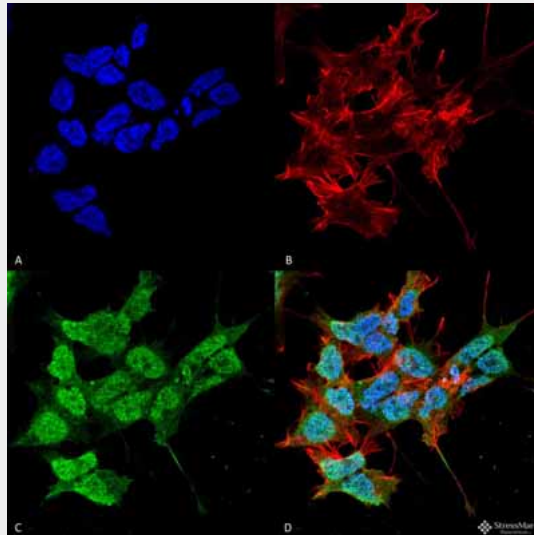
**PEX6 Antibody - Protocols**

Provided below are standard protocols that you may find useful for product applications.

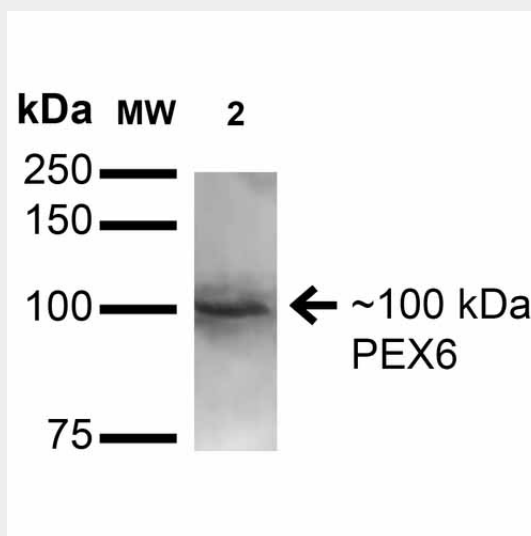
- [Western Blot](#)

- [Blocking Peptides](#)
- [Dot Blot](#)
- [Immunohistochemistry](#)
- [Immunofluorescence](#)
- [Immunoprecipitation](#)
- [Flow Cytometry](#)
- [Cell Culture](#)

**PEX6 Antibody - Images**



Immunocytochemistry/Immunofluorescence analysis using Mouse Anti-PEX6 Monoclonal Antibody, Clone S233-8 (ASM10302). Tissue: Neuroblastoma cell line (SK-N-BE). Species: Human. Fixation: 4% Formaldehyde for 15 min at RT. Primary Antibody: Mouse Anti-PEX6 Monoclonal Antibody (ASM10302) at 1:100 for 60 min at RT. Secondary Antibody: Goat Anti-Mouse ATTO 488 at 1:100 for 60 min at RT. Counterstain: Phalloidin Texas Red F-Actin stain; DAPI (blue) nuclear stain at 1:1000; 1:5000 for 60 min RT, 5 min RT. Localization: Cytoplasm, Peroxisome, Peroxisome Membrane, Nucleus. Magnification: 60X. (A) DAPI (blue) nuclear stain (B) Phalloidin Texas Red F-Actin stain (C) PEX6 Antibody (D) Composite.



Western Blot analysis of Rat Brain showing detection of ~100 kDa PEX6 protein using Mouse Anti-PEX6 Monoclonal Antibody, Clone S233-8 (ASM10302). Lane 1: Molecular Weight Ladder.

Lane 2: Rat Brain. Load: 15  $\mu$ g. Block: 2% BSA and 2% Skim Milk in 1X TBST. Primary Antibody: Mouse Anti-PEX6 Monoclonal Antibody (ASM10302) at 1:200 for 16 hours at 4°C. Secondary Antibody: Goat Anti-Mouse IgG: HRP at 1:1000 for 1 hour RT. Color Development: ECL solution for 6 min in RT. Predicted/Observed Size: ~100 kDa.

### **PEX6 Antibody - Background**

This gene encodes a member of the AAA (ATPases associated with diverse cellular activities) family of ATPases. This member is a predominantly cytoplasmic protein, which plays a direct role in peroxisomal protein import and is required for PTS1 (peroxisomal targeting signal 1, a C-terminal tripeptide of the sequence ser-lys-leu) receptor activity. Mutations in this gene cause peroxisome biogenesis disorders of complementation group 4 and complementation group 6.