

AC012

Leader in Biomolecular Solutions for Life Science



## $\alpha$ -Tubulin Mouse mAb

Catalog No.: AC012

105 Publications

### Basic Information

#### Observed MW

50kDa

#### Calculated MW

50kDa

#### Category

Monoclonal Antibody

#### Applications

WB,IHC-P,IF/ICC,IP,ELISA

#### Cross-Reactivity

Human,Mouse,Rat

#### CloneNo number

AMC0479

### Background

Microtubules of the eukaryotic cytoskeleton perform essential and diverse functions and are composed of a heterodimer of alpha and beta tubulin. The genes encoding these microtubule constituents are part of the tubulin superfamily, which is composed of six distinct families. Genes from the alpha, beta and gamma tubulin families are found in all eukaryotes. The alpha and beta tubulins represent the major components of microtubules, while gamma tubulin plays a critical role in the nucleation of microtubule assembly. There are multiple alpha and beta tubulin genes and they are highly conserved among and between species. This gene encodes an alpha tubulin that is a highly conserved homolog of a rat testis-specific alpha tubulin. Alternatively spliced transcript variants encoding different isoforms have been found for this gene.

### Recommended Dilutions

**WB** 1:5000 - 1:10000

**IHC-P** 1:50 - 1:200

**IF/ICC** 1:100 - 1:200

**IP** 0.5ug-4ug antibody for  
200ug-400ug extracts  
of whole cells

**ELISA** Recommended starting  
concentration is 1  
 $\mu$ g/mL. Please optimize  
the concentration  
based on your specific  
assay requirements.

### Immunogen Information

#### Gene ID

7277

#### Swiss Prot

P68366

#### Immunogen

Recombinant protein of human  $\alpha$ -Tubulin

#### Synonyms

ALS22; TUBA1; H2-ALPHA;  $\alpha$ -Tubulin

### Product Information

#### Source

Mouse

#### Isotype

IgG1

#### Purification

Affinity purification

#### Storage

Store at  $-20^{\circ}\text{C}$ . Avoid freeze / thaw cycles.

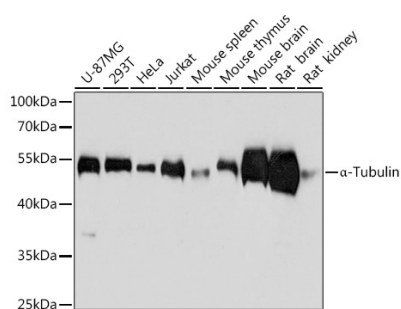
Buffer: PBS with 0.02% sodium azide, 1% BSA, 50% glycerol, pH7.3.

### Contact



[www.abclonal.com](http://www.abclonal.com)

## Validation Data



Western blot analysis of various lysates using  $\alpha$ -Tubulin Mouse mAb (AC012) at 1:5000 dilution.

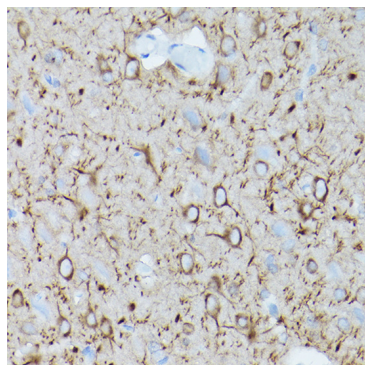
Secondary antibody: HRP-conjugated Goat anti-Mouse IgG (H+L) (AS003) at 1:10000 dilution.

Lysates/proteins: 25 $\mu$ g per lane.

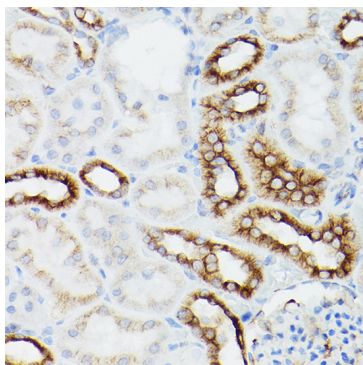
Blocking buffer: 3% nonfat dry milk in TBST.

Detection: ECL Basic Kit (RM00020).

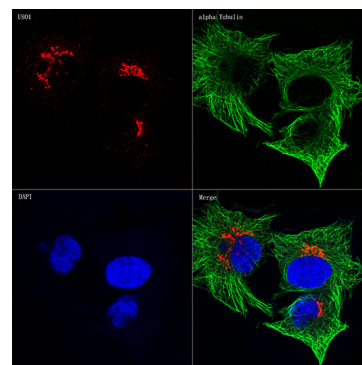
Exposure time: 5s.



Immunohistochemistry analysis of paraffin-embedded Mouse brain using  $\alpha$ -Tubulin Mouse mAb (AC012) at dilution of 1:100 (40x lens). High pressure antigen retrieval performed with 0.01M Citrate Bufferr (pH 6.0) prior to IHC staining.



Immunohistochemistry analysis of paraffin-embedded Mouse kidney using  $\alpha$ -Tubulin Mouse mAb (AC012) at dilution of 1:100 (40x lens). High pressure antigen retrieval performed with 0.01M Citrate Bufferr (pH 6.0) prior to IHC staining.



Confocal imaging of HeLa cells using  $\alpha$ -Tubulin Mouse mAb (AC012, dilution 1:200)(Green). The cells were counterstained with USO1 Rabbit mAb (A20950, dilution 1:100) (Red). DAPI was used for nuclear staining (blue). Objective: 60x.