

Brevican Antibody
Brevican Antibody, Clone S294A-6
Catalog # ASM10262

Specification

Brevican Antibody - Product Information

Application	WB
Primary Accession	P55068
Other Accession	NP_001028837.1
Host	Mouse
Isotype	IgG2B
Reactivity	Mouse, Rat
Clonality	Monoclonal

Description

Mouse Anti-Rat Brevican Monoclonal IgG2B

Target/Specificity

Detects ~140kDa (and smaller due to proteolytic cleavage).

Other Names

BCAN Antibody, BEHAB Antibody, CSPG7 Antibody, Brain enriched hyaluronan binding protein Antibody, Brevican core protein Antibody, Brevican core protein isoform 1 Antibody, Brevican core protein isoform 2 Antibody, Brevican proteoglycan Antibody, Chondroitin sulfate proteoglycan 7 Antibody, Chondroitin sulfate proteoglycan BEHAB Antibody, MGC13038 Antibody

Immunogen

Fusion protein amino acids 219-655 of rat Brevican

Purification

Protein G Purified

Storage **-20°C**

Storage Buffer

PBS pH7.4, 50% glycerol, 0.09% sodium azide

Shipping Temperature **Blue Ice or 4°C**

Certificate of Analysis

1 µg/ml of SMC-428 was sufficient for detection of Brevican in 20 µg of rat brain lysate by colorimetric immunoblot analysis using Goat anti-mouse IgG:HRP as the secondary antibody.

Cellular Localization

Extracellular Space | Extracellular Matrix | Membrane | Lipid-Anchor | GPI-Anchor

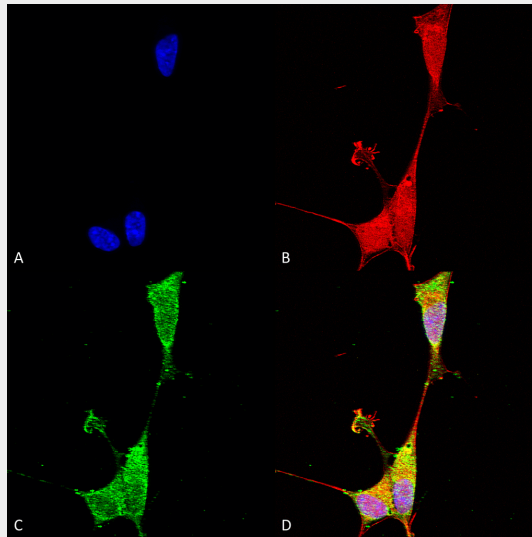
Brevican Antibody - Protocols

Provided below are standard protocols that you may find useful for product applications.

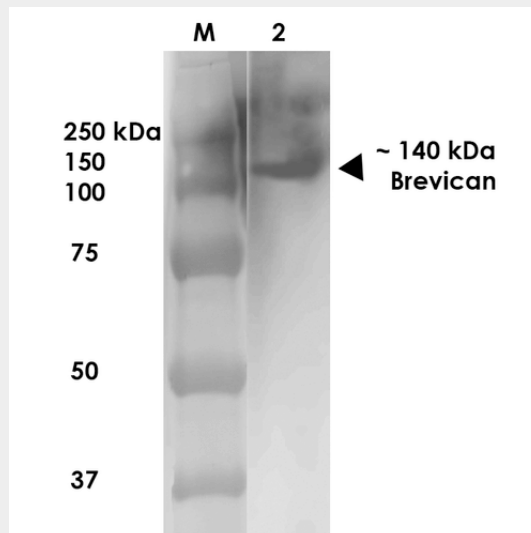
- [Western Blot](#)
- [Blocking Peptides](#)

- [Dot Blot](#)
- [Immunohistochemistry](#)
- [Immunofluorescence](#)
- [Immunoprecipitation](#)
- [Flow Cytometry](#)
- [Cell Culture](#)

Brevican Antibody - Images



Immunocytochemistry/Immunofluorescence analysis using Mouse Anti-Brevican Monoclonal Antibody, Clone N294A/6 (ASM10262). Tissue: Neuroblastoma cells (SH-SY5Y). Species: Human. Fixation: 4% PFA for 15 min. Primary Antibody: Mouse Anti-Brevican Monoclonal Antibody (ASM10262) at 1:100 for overnight at 4°C with slow rocking. Secondary Antibody: AlexaFluor 488 at 1:1000 for 1 hour at RT. Counterstain: Phalloidin-iFluor 647 (red) F-Actin stain; Hoechst (blue) nuclear stain at 1:800, 1.6mM for 20 min at RT. (A) Hoechst (blue) nuclear stain. (B) Phalloidin-iFluor 647 (red) F-Actin stain. (C) Brevican Antibody (D) Composite.



Western Blot analysis of Rat Brain Membrane showing detection of ~140 kDa Brevican protein using Mouse Anti-Brevican Monoclonal Antibody, Clone N294A/6 (ASM10262). Lane 1: MW Ladder. Lane 2: Rat Brain Membrane (10 µg). Load: 10 µg. Block: 5% milk. Primary Antibody: Mouse Anti-Brevican Monoclonal Antibody (ASM10262) at 1:1000 for 1 hour at RT. Secondary Antibody:

Goat Anti-Mouse IgG: HRP at 1:200 for 1 hour at RT. Color Development: TMB solution for 10 min at RT. Predicted/Observed Size: ~140 kDa.

Brevican Antibody - Background

Brevican is the most abundant chondroitin sulfate proteoglycan in the extracellular matrix of the adult brain. It is a member of the lectican family of aggregating extracellular matrix proteoglycans that bear chondroitin sulfate (CS) chains. It is highly expressed in the central nervous system and is thought to stabilize synapses and inhibit neural plasticity. Brevican is secreted from astrocytes and neurons as a 145 kD core protein that bears up to three, covalently-linked, CS chains. It is also secreted as a 145 kD core protein without CS chains. When cleaved by extracellular glutamyl endopeptidases, the ADAMTSs, a 55 kD N-terminal fragment is formed that contains the unique C terminal epitope EAMESE.

Brevican Antibody - References

1. Yamada H., Watanabe K., Shimonaka M. and Yamaguchi Y. (1994) J. Biol. Chem. 269: 10119-10126.
2. Yamada H., Watanabe K., Shimonaka M., Yamasaki M. and Yamaguchi Y. (1995) Biochem. Biophys. Res. Commun. 216: 957-963.
3. Rauch U., et al. (1997) Genomics 44: 15-21.
4. Zhang H., Kelly G., Zerillo C., Jaworski D.M. and Hockfield S. (1998) J. Neurosci. 7: 2370-2376.
5. Aspegren A., Adam S., Kostka G., Timpl R. and Heinegard D. (1999) J. Biol. Chem. 274: 20444-20449.