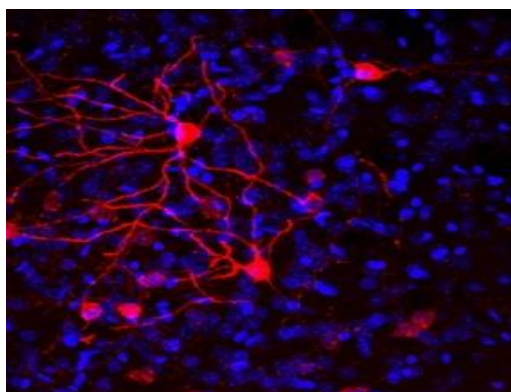
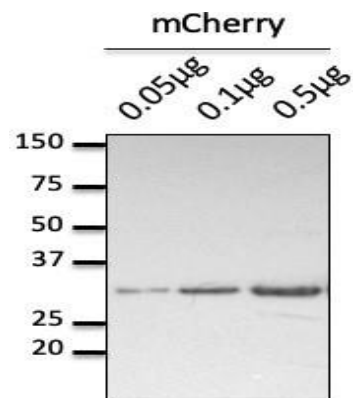


## Anti-RFP antibody

**Cat# NB-22-51512 Size: 200µg/100µL; 40µg/20µL; 100µg/50µL**



Immunofluorescence – Mice brain transduced with AAV with Cre-dependent expression of mCherry. Free- floating slices fixed with 4% of PFA. antibody at 1:1000 dilution; Courtesy of Rodrigues, Univ Minho



Anti-mCherry antibody at 1:15, 000 dilution; 0.05 µg, 0.1 µg and 0.5 µg of purified recombinant mCherry; rabbit polyclonal to chicken IgY (HRP) at 1:10000 dilution

### GENERAL INFORMATION

<b>Product Type</b>	Primary antibodies
<b>Short Description</b>	Chicken polyclonal antibody anti-Red Fluorescent Protein is suitable for use in Western Blot, Immunofluorescence and ELISA research applications.
<b>Applications</b>	WB, IF, ELISA
<b>Host/Source</b>	Chicken
<b>Reactivity</b>	Transfected cells

### PRODUCT PROPERTIES

<b>Clonality</b>	Polyclonal
<b>Clone ID</b>	
<b>Concentration</b>	2 mg/mL
<b>Conjugation</b>	Unconjugated
<b>Purification</b>	Affinity purified using the immunogen immobilized on a solid support.
<b>Dilution Range</b>	WB 1:10
<b>Formulation</b>	PBS, 20% glycerol and 0.05% sodium azide.
<b>Isotype</b>	IgY
<b>Storage Instruction</b>	For continuous use, store at 2-8 C for one-two days. For extended storage, store in -20 C freezer. Working dilution samples should be discarded if not used within 12 hours.

## TARGET INFORMATION

**Gene ID**

**Gene Symbol**

**Uniprot ID**

**Immunogen**

Affinity purified recombinant Red Fluorescent Protein (mCherry).

**Immunogen Region**

**Specificity**

This antibody recognizes a single band with predicted molecular weight in Western blot analysis.

**Immunogen Sequence**

This product is suitable for in-vitro studies under the RESEARCH USE ONLY [RUO] licence. This product must not be used as for diagnostic or other medical purposes.

For reference only