

MAP2K6 antibody

Product Information

Catalog No.:	FNab05118
Size:	100µg
Form:	liquid
Purification:	Immunogen affinity purified
Purity:	≥95% as determined by SDS-PAGE
Host:	Rabbit
Clonality:	polyclonal
Clone ID:	None
IsoType:	IgG
Storage:	PBS with 0.02% sodium azide and 50% glycerol pH 7.3, -20°C for 12 months(Avoid repeated freeze / thaw cycles.)

Background

This gene encodes a member of the dual specificity protein kinase family, which functions as a mitogen-activated protein(MAP) kinase kinase. MAP kinases, also known as extracellular signal-regulated kinases(ERKs), act as an integration point for multiple biochemical signals. This protein phosphorylates and activates p38 MAP kinase in response to inflammatory cytokines or environmental stress. As an essential component of p38 MAP kinase mediated signal transduction pathway, this gene is involved in many cellular processes such as stress induced cell cycle arrest, transcription activation and apoptosis.

Immunogen information

Immunogen:	mitogen-activated protein kinase kinase 6
Synonyms:	Dual specificity mitogen-activated protein kinase kinase 6 (MAP kinase kinase 6, MAPKK 6) MAPK/ERK kinase 6 (MEK 6) Stress-activated protein kinase kinase 3 (SAPK kinase 3, SAPKK-3, SAPKK3) MAP2K6 MEK6 MKK6 PRKMK6 SKK3
Observed MW:	37 kDa
Uniprot ID :	P52564

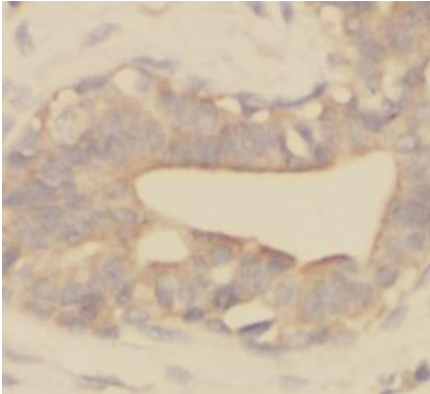
Application

Reactivity:	Human, Mouse, Rat
-------------	-------------------

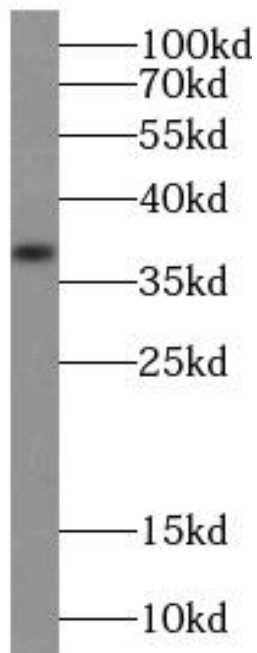
Tested Application: ELISA, WB, IHC, FC

Recommended dilution: WB: 1:500-1:2400; IHC: 1:50-1:500

Image:



Immunohistochemistry of paraffin-embedded human breast cancer using FNab05118(MAP2K6 antibody) at dilution of 1:100



human kidney tissue were subjected to SDS PAGE followed by western blot with FNab05118(MAP2K6 antibody) at dilution of 1:500