

**DUX4 Antibody**  
**DUX4 Antibody, Clone P2B1**  
**Catalog # ASM10140****Specification**

---

**DUX4 Antibody - Product Information**

Application	<b>WB</b>
Primary Accession	<a href="#">F5GZ66</a>
Other Accession	<a href="#">NP_149418.3</a>
Host	<b>Mouse</b>
Isotype	<b>IgG1</b>
Reactivity	<b>Human, Mouse</b>
Clonality	<b>Monoclonal</b>

**Description**

Mouse Anti-Human DUX4 Monoclonal IgG1

**Target/Specificity**

Detects ~45kDa. No cross-reactivity with DUX4c.

**Other Names**

Double homeobox 4 Antibody, Double homeobox 10 Antibody, DUX10 Antibody, Double homeobox protein 4/10 Antibody

**Immunogen**

C-terminal 76 amino acids of DUX4 with glutathione-s-transferase (gst) tag

**Purification**

Protein G Purified

Storage **-20°C****Storage Buffer**

PBS pH7.4, 50% glycerol, 0.09% sodium azide

Shipping Temperature **Blue Ice or 4°C****Certificate of Analysis**

1 µg/ml of SMC-192 was sufficient for detection of DUX4 in 20 µg of HeLa cell lysate by ECL immunoblot analysis using goat anti-mouse IgG: HRP as the secondary.

**Cellular Localization**

Nucleus

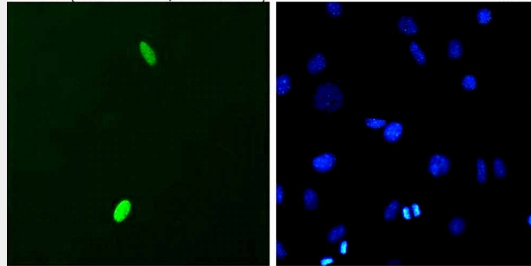
**DUX4 Antibody - Protocols**

Provided below are standard protocols that you may find useful for product applications.

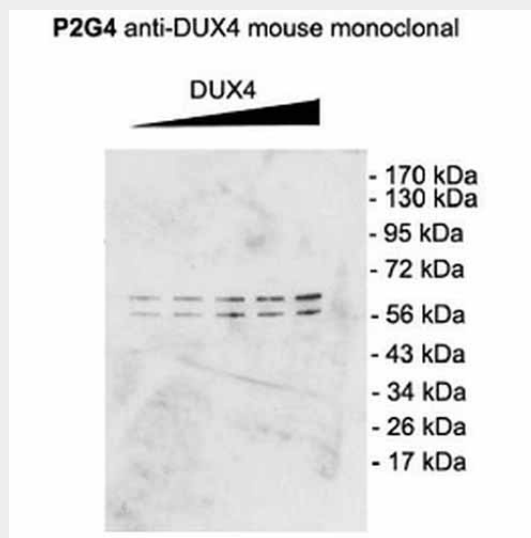
- [Western Blot](#)
- [Blocking Peptides](#)
- [Dot Blot](#)
- [Immunohistochemistry](#)

- [Immunofluorescence](#)
- [Immunoprecipitation](#)
- [Flow Cytometry](#)
- [Cell Culture](#)

### DUX4 Antibody - Images



Immunocytochemistry/Immunofluorescence analysis using Mouse Anti-DUX4 Monoclonal Antibody, Clone P2B1 (ASM10140). Tissue: C2C12 myoblast cells. Species: Mouse. Primary Antibody: Mouse Anti-DUX4 Monoclonal Antibody (ASM10140) at 1:1000. Secondary Antibody: FITC Goat Anti-Mouse (green). Counterstain: DAPI (blue) nuclear stain.



Western Blot analysis of Mouse C2C12 cell lysate showing detection of DUX4 protein using Mouse Anti-DUX4 Monoclonal Antibody, Clone P2B1 (ASM10140). Primary Antibody: Mouse Anti-DUX4 Monoclonal Antibody (ASM10140) at 1:1000. Cells transfected with pCS2+DUX4 which, contains an additional upstream start site.

### DUX4 Antibody - Background

DUX4, or double homeobox4, is a human protein that is a transcriptional activator of paired-like homeodomain transcription factor 1 (1). Clinically it is a facioscapulohumeral muscular dystrophy candidate gene that appears to have a toxic gain of function (2-4). In FSHD individuals, the expression of the full-length DUX4 transcript is not completely suppressed in skeletal muscle and possibly other differentiated tissues (5).

### DUX4 Antibody - References

1. Entrez Gene: "Dux4 Double Homeobox, 4"
2. Dixit M., et al., (2007) Proc. Natl Acad Sci. USA. 104(46): 18157-18162.
3. Kowaljaw V., et al. (2007) Neuromuscl Disord. 17(8): 611-623.

4. Lemmers R., et al. (2010) Science Express. 329(5999): 1650-1653.
5. Snider L., et al. (2010) PLoS Genetics. 6:1-14.