

GABA-A Receptor Beta3 Antibody
GABA A Receptor Beta3 Antibody, Clone S87-25
Catalog # ASM10215**Specification**

GABA-A Receptor Beta3 Antibody - Product Information

Application	IHC, WB
Primary Accession	P63080
Other Accession	NP_032097.1
Host	Mouse
Isotype	IgG1
Reactivity	Human, Mouse, Rat
Clonality	Monoclonal
Format	APC

Description

Mouse Anti-Mouse GABA-A Receptor Beta3 Monoclonal IgG1

Target/Specificity

Detects ~55kDa. No cross-reactivity against GABA-A-R-Beta 2 or -Beta1.

Other Names

ECA5 antibody, GABA alpha receptor beta-2 subunit antibody, GABA(A) receptor subunit beta-3 antibody, GABAA receptor beta 3 subunit antibody, GABAA receptor subunit beta 3 antibody, GABRB3 antibody, Gabrb3 antibody, Gamma aminobutyric acid (GABA) A receptor beta 3 antibody, Gamma aminobutyric acid receptor subunit beta 3 antibody, Gamma-aminobutyric acid receptor subunit beta-3 antibody, GBRB3_HUMAN antibody, MGC9051 antibody

Immunogen

Fusion protein amino acids 370-433 of mouse GABA-A-R-Beta3

Purification

Protein G Purified

Storage **-20°C**

Storage Buffer

PBS pH7.4, 50% glycerol, 0.09% sodium azide

Shipping Temperature

Blue Ice or 4°C

Certificate of Analysis

1 µg/ml of SMC-339 was sufficient for detection of Beta3 GABA receptor in 10 µg of rat brain lysate by colorimetric immunoblot analysis using goat anti-mouse IgG:HRP as the secondary antibody.

Cellular Localization

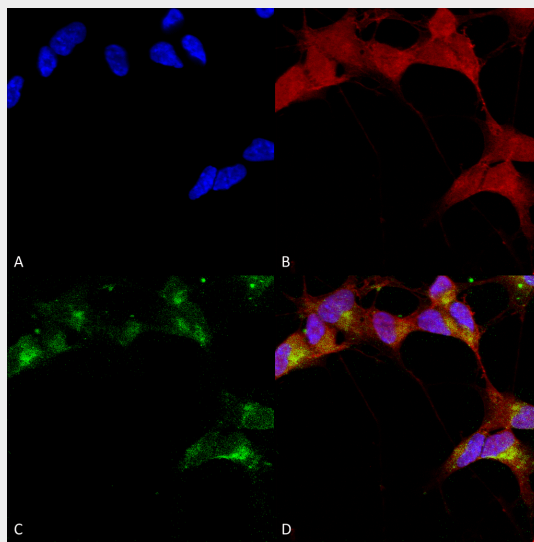
Cell Membrane | Cell Junction | Synapse | Postsynaptic Cell Membrane

GABA-A Receptor Beta3 Antibody - Protocols

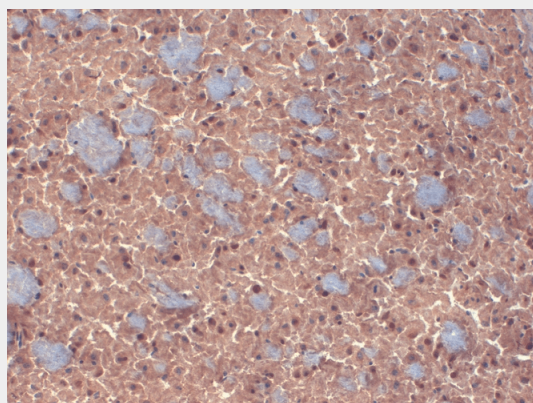
Provided below are standard protocols that you may find useful for product applications.

- [Western Blot](#)
- [Blocking Peptides](#)
- [Dot Blot](#)
- [Immunohistochemistry](#)
- [Immunofluorescence](#)
- [Immunoprecipitation](#)
- [Flow Cytometry](#)
- [Cell Culture](#)

GABA-A Receptor Beta3 Antibody - Images

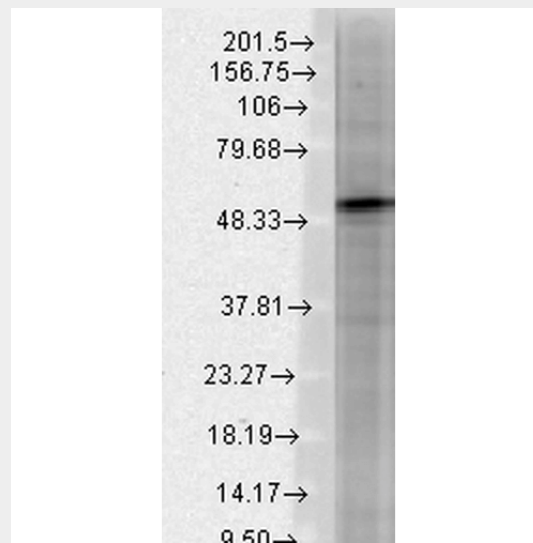


Immunocytochemistry/Immunofluorescence analysis using Mouse Anti-GABA-A Receptor Beta 3 Monoclonal Antibody, Clone N87/25 (ASM10215). Tissue: Neuroblastoma cells (SH-SY5Y). Species: Human. Fixation: 4% PFA for 15 min. Primary Antibody: Mouse Anti-GABA-A Receptor Beta 3 Monoclonal Antibody (ASM10215) at 1:100 for overnight at 4°C with slow rocking. Secondary Antibody: AlexaFluor 488 at 1:1000 for 1 hour at RT. Counterstain: Phalloidin-iFluor 647 (red) F-Actin stain; Hoechst (blue) nuclear stain at 1:800, 1.6mM for 20 min at RT. (A) Hoechst (blue) nuclear stain. (B) Phalloidin-iFluor 647 (red) F-Actin stain. (C) GABA-A Receptor Beta 3 Antibody (D) Composite.



Immunohistochemistry analysis using Mouse Anti-GABA A Receptor Monoclonal Antibody, Clone N87/25 (ASM10215). Tissue: Brain. Species: mouse. Fixation: 10% Formalin Solution for 12-24 hours at RT. Primary Antibody: Mouse Anti-GABA A Receptor Monoclonal Antibody (ASM10215) at 1:1000 for 1 hour at RT. Secondary Antibody: HRP/DAB Detection System: Biotinylated Goat Anti-Mouse, Streptavidin Peroxidase, DAB Chromogen (brown) for 30 minutes at RT. Counterstain:

Mayer Hematoxylin (purple/blue) nuclear stain at 250-500 µl for 5 minutes at RT.



Western Blot analysis of Rat brain membrane lysate showing detection of GABA A Receptor protein using Mouse Anti-GABA A Receptor Monoclonal Antibody, Clone N87/25 (ASM10215). Load: 15 µg. Block: 1.5% BSA for 30 minutes at RT. Primary Antibody: Mouse Anti-GABA A Receptor Monoclonal Antibody (ASM10215) at 1:1000 for 2 hours at RT. Secondary Antibody: Sheep Anti-Mouse IgG: HRP for 1 hour at RT.

GABA-A Receptor Beta3 Antibody - Background

The GABA-A receptor is a member of the superfamily of fast acting ligand-gated ion channels. The individual subunits of these receptors have similar sequences and structural features (1). GABA-A receptors are the major fast inhibitory neurotransmitter gated ion channels in the brain (2).

GABA-A Receptor Beta3 Antibody - References

1. Bracamontes J.R. and Steinbach J.H. (2008) J Bio Chem. 283: 26128-26136.
2. Macdonald R.L., Olsen R.W. (1993) Annu Rev Neurosci. 17: 569-602.