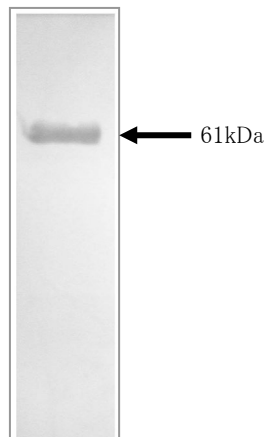




## Anti Chicken Adenosine deaminase 2 Polyclonal Antibody

Package Size	25 $\mu$ g (100 $\mu$ L / vial)
Format	Rabbit polyclonal antibody 0.25mg/mL
Buffer	PBS [containing 2% Block Ace as a stabilizer, 0.1% Proclin as a bacteriostat]
Storage	Store below -20°C Once thawed, store at 4°C. Repeated freeze-thaw cycles should be avoided.
Purification method	This antibody was purified from rabbit serum immunized with partial peptide of chicken ADA2 by peptide affinity chromatography.
Working dilution	For western blotting ;5 $\mu$ g/mL



### Western blotting

Sample : Chiken liver ADA2

Preparation of antibodies and instruction:

Watanabe Y., Egawa S.

Hokkaido Pharmaceutical University School of Pharmacy



## **Anti Chicken Adenosine deaminase 2 Polyclonal Antibody**

### **【Reference】**

1. Kobayashi F. et al. : Am J Gastroenterol. 1993 Feb;88(2):266-71
2. Iwaki-Egawa S. et al. : Comp Biochem Physiol. Part B 2004 Feb;137(2):247-54

#### **Manufacturer**



**Medicinal Chemistry Pharmaceutical Co., Ltd.**

#### **Kobe Research Institute**

7-1-14 Minatojimaminami-machi, Chuo-ku, Kobe, Japan 650-0047

Telephone: +81-78-945-7075 FAX:+81-78-306-0694

URL:<https://soyaku.co.jp/english/> tech-kobe@soyaku.co.jp

#### **Previous manufacturer**



**Trans Genic Inc.**