

ADAM22 (cytoplasmic) Antibody
ADAM22 Antibody, Clone S46-30
Catalog # ASM10245

Specification

ADAM22 (cytoplasmic) Antibody - Product Information

Application	WB
Primary Accession	O9R1V6
Other Accession	NP_001007221.1
Host	Mouse
Isotype	IgG2B
Reactivity	Human, Mouse, Rat
Clonality	Monoclonal

Description

Mouse Anti-Mouse ADAM22 (cytoplasmic) Monoclonal IgG2B

Target/Specificity

Detects the cytoplasmic domain of ADAM22 ~90kDa. Weak human detection.

Other Names

MDC2 Antibody, Disintegrin and metalloproteinase domain-containing protein 22 Antibody, Metalloproteinase disintegrin ADAM22-3 Antibody, Metalloproteinase-like disintegrin-like and cysteine-rich protein 2 Antibody, ADAM 22 Antibody, ADAM metalloproteinase domain 22 Antibody, MGC149832 Antibody

Immunogen

Fusion protein amino acids 757-857 (cytoplasmic region) of mouse ADAM22

Purification

Protein G Purified

Storage **-20°C**

Storage Buffer

PBS pH7.4, 50% glycerol, 0.09% sodium azide

Shipping Temperature **Blue Ice or 4°C**

Certificate of Analysis

1 µg/ml of SMC-411 was sufficient for detection of ADAM22 in 10 µg of rat brain lysate by colorimetric immunoblot analysis using Goat anti-mouse IgG:HRP as the secondary antibody.

Cellular Localization

Membrane

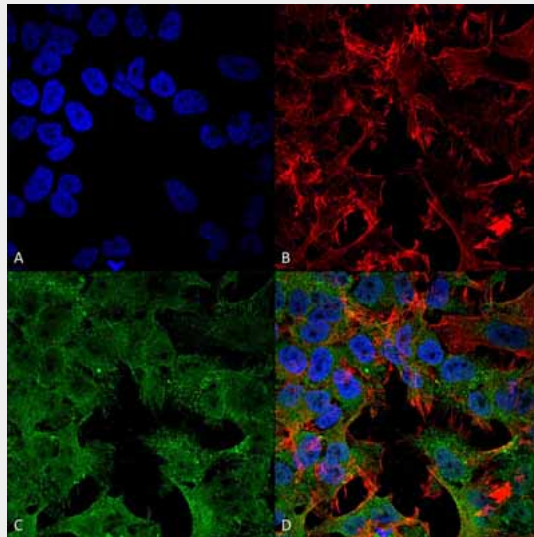
ADAM22 (cytoplasmic) Antibody - Protocols

Provided below are standard protocols that you may find useful for product applications.

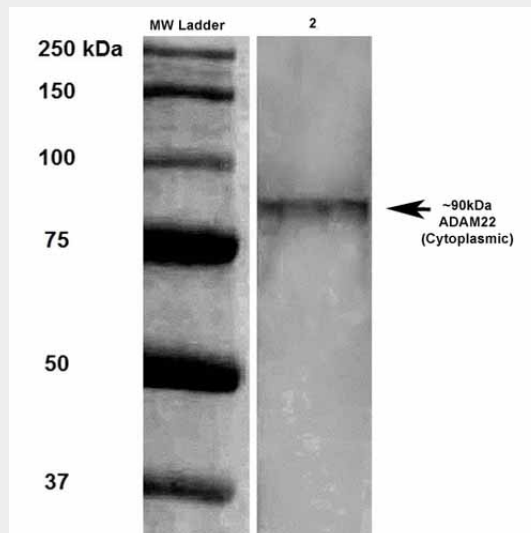
- [Western Blot](#)
- [Blocking Peptides](#)

- [Dot Blot](#)
- [Immunohistochemistry](#)
- [Immunofluorescence](#)
- [Immunoprecipitation](#)
- [Flow Cytometry](#)
- [Cell Culture](#)

ADAM22 (cytoplasmic) Antibody - Images



Immunocytochemistry/Immunofluorescence analysis using Mouse Anti-ADAM22 (cytoplasmic) Monoclonal Antibody, Clone S46-30 (ASM10245). Tissue: Neuroblastoma cell line (SK-N-BE). Species: Human. Fixation: 4% Formaldehyde for 15 min at RT. Primary Antibody: Mouse Anti-ADAM22 (cytoplasmic) Monoclonal Antibody (ASM10245) at 1:100 for 60 min at RT. Secondary Antibody: Goat Anti-Mouse ATTO 488 at 1:200 for 60 min at RT. Counterstain: Phalloidin Texas Red F-Actin stain; DAPI (blue) nuclear stain at 1:1000, 1:5000 for 60 min at RT, 5 min at RT. Localization: Cell Membrane, Cytoplasm. Magnification: 60X.



Western Blot analysis of Rat brain membrane lysate showing detection of ADAM22 protein using Mouse Anti-ADAM22 Monoclonal Antibody, Clone S46-30 (ASM10245). Primary Antibody: Mouse Anti-ADAM22 Monoclonal Antibody (ASM10245) at 1:100.

ADAM22 (cytoplasmic) Antibody - Background

ADAM 22 belongs to the ADAM gene family which have been shown to bind integrin and therefore may have a part in cell to cell or cell to matrix interactions. ADAM 22 is unique in the fact that it is only observed in the nervous system and predominantly in the brain. ADAM 22 is attached by cytoskeletal scaffolds to the postsynaptic density and is a receptor for LGI1.

ADAM22 (cytoplasmic) Antibody - References

1. Sagane K., Ohya Y., Hasegawa T., Tanaka I. (1998) *Biochem J.* 334 (Pt1): 93-98.