

## SRC antibody

### Product Information

Catalog No.:	FNab08216
Size:	100µg
Form:	liquid
Purification:	Immunogen affinity purified
Purity:	≥95% as determined by SDS-PAGE
Host:	Rabbit
Clonality:	polyclonal
Clone ID:	None
IsoType:	IgG
Storage:	PBS with 0.02% sodium azide and 50% glycerol pH 7.3, -20°C for 12 months(Avoid repeated freeze / thaw cycles.)

### Background

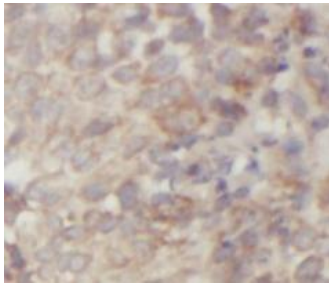
SRC, also named as SRC1 and p60-Src, belongs to the protein kinase superfamily, Tyr protein kinase family and SRC subfamily. It is a non-receptor protein tyrosine kinase that plays pivotal roles in numerous cellular processes such as proliferation, migration, and transformation. In concert with PTK2B, SRC plays an important role in osteoclastic bone resorption. It promotes energy production in osteoclasts by activating mitochondrial cytochrome C oxidase.

### Immunogen information

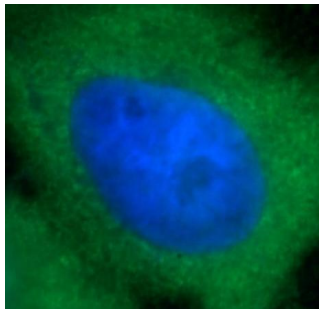
Immunogen:	v-src sarcoma(Schmidt-Ruppin A-2) viral oncogene homolog
Synonyms:	Proto-oncogene tyrosine-protein kinase Src Proto-oncogene c-Src pp60c-src (p60-Src) SRC SRC1
Observed MW:	55 kDa, 60 kDa
Uniprot ID :	P12931

### Application

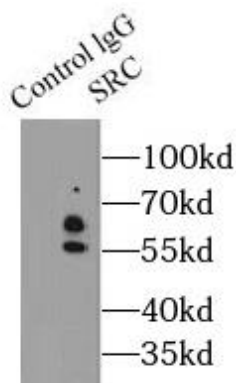
Reactivity:	Human, Mouse, Rat, Hamster
Tested Application:	ELISA, IHC, IP, FC, IF, WB
Recommended dilution:	WB: 1:500-1:2000; IP: 1:500-1:2000; IHC: 1:100-1:400; IF: 1:10-1:100
Image:	



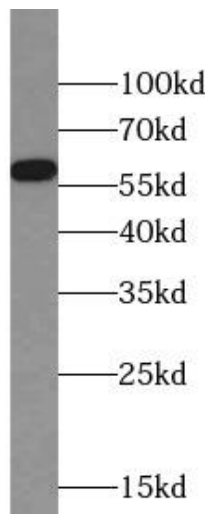
Immunohistochemistry of paraffin-embedded human breast cancer tissue slide using FNab08216(c-SRC Antibody) at dilution of 1:200



Immunofluorescent analysis of A431 cells using FNab08216 (SRC antibody) at dilution of 1:25 and Alexa Fluor 488-conjugated Goat Anti-Rabbit IgG(H+L)



IP Result of anti-SRC (IP: FNab08216, 5ug; Detection: FNab08216 1:1000) with SH-SY5Y cells lysate 2900ug.



Jurkat cells were subjected to SDS PAGE followed by western blot with FNab08216(SRC antibody) at dilution of 1:1000