



ERK1 antibody 3001

Applications

Western blot
Immunoprecipitation

Species cross reactivity

Human, Mouse, Rat

Molecular weight

ERK1 44 kDa, ERK2 42 kDa

Background

The extracellular signal-related kinase 1 and 2 (ERK1 and ERK2), also known as p44 and p42 MAP kinases, are members of the Mitogen Activated Protein Kinase (MAPK) family of proteins found in all eukaryotes. The ERK1/2 signaling cascade is a critical regulator of cell differentiation, cell physiology and neuronal function. Atypical ERK1/2 activity is implicated in a variety of conditions including cancer and autoimmune diseases.

Immunogen

CARFQPGVLEAP

NCBI protein accession number

P27361

Source and purification

Affinity purified sheep polyclonal antibody

Protocol

For Western blot analysis, block membrane with 5 % w/v milk, 1x TBS and 0.1% Tween-20 (TBST) for 30 min at room temperature and incubate with diluted antibody (in 1 % w/v BSA, TBST) at 4 °C overnight with gentle rocking.

For Immunoprecipitation, incubate 200 µl of cell lysate with primary antibody at 4 °C overnight with gentle rocking. Add protein G agarose beads (20 µl of 50% bead slurry) and incubate at 4 °C for 1-3 hours with gentle rocking. Centrifuge for 30 seconds at 4 °C. Wash pellet 5 times with 500 µl of 1 x cell lysis buffer. Keep on ice during washes.



www.symansis.com

FOR RESEARCH USE ONLY

© 2008 Symansis

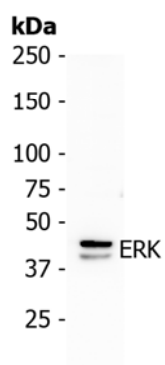


Storage and use

100 µg supplied as lyophilised protein in 10 mM sodium HEPES (pH 7.5), 150 mM NaCl, and 0.05 % sodium azide. Store at 4 °C. Reconstitute in 100 µl of sterile water. This product is for in vitro use only

Recommended antibody dilutions

Western blotting	1 µg/ml
Immunoprecipitation	5 µg/500 µg lysate



Western blot analysis of extracts from HepG2 cells.

This antibody was also validated for immunoprecipitation in rat liver lysate (data not shown).



www.symansis.com

FOR RESEARCH USE ONLY
© 2008 Symansis